



**Installation rules**

**Fluids :**

- Filtered and lubricated air.
- Mineral oil with viscosity between 16 and 160 cSt 40° C 25 μ nominal.
- Water, water solutions or emulsions.

**Temperatures :**

- 20°C +60°C (140° C HT mod.)
- As a torque generator, rotary actuator can not accept axial and/or radial loads.
- The use of mechanical stroke-end is advisable.
- E' consigliabile l'uso di fine corsa meccanici esterni.



A MEMBER FOR MOVEMENTS ANGLE IRONS

Angle	Model	TORQUE IN daNm (Kgm) a :								Displacem. cc7a	Maximun Pressure		Weight Kg
		2 bar	4 bar	6 bar	8 bar	10 bar	12 bar	15 bar	20 bar		air	liquid	
90°	5.2	0,8	1,7	2,6	3,5	4,4	5,3	6,6	8,9	70	10 bar	20 bar	0,9
	5.4	1,9	3,9	5,9	7,8	9,8	11,8	14	19	155			2
	5.8	3	6	9	12	15	18	23	31	245			2,4
	5.18	7	14	21	28	35	43	53	71	565			4,7
	5.32	12	25	37	50	63	75	94	126	990			6,5
	5.60	26	51	78	105	131	157	-	-	2250	12 bar	16,5	
	5.120	48	96	144	192	240	-	-	-	4500	8 bar	-	35

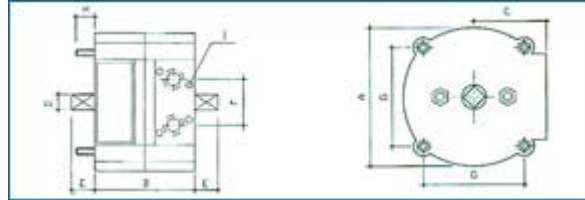
Angle	Model	TORQUE IN daNm (Kgm) a :								Displacem. cc7a	Maximun Pressure		Peso Kg
		2 bar	4 bar	6 bar	8 bar	10 bar	12 bar	15 bar	20 bar		air	liquid	
120°	7.2	0,8	1,7	2,6	3,5	4,4	5,3	6,6	8,9	70	10 bar	20 bar	0,9
	7.4	1,9	3,9	5,9	7,8	9,8	11,8	14	19	155			2
	7.8	3	6	9	12	15	18	23	31	245			2,4
	7.18	7	14	21	28	35	43	53	71	565			4,7
	7.32	12	25	37	50	63	75	94	126	990			6,5
	7.60	26	51	78	105	131	157	-	-	2250	12 bar	16,5	

Angle	Model	TORQUE IN daNm (Kgm) a :								Displacem. cc7a	Maximun Pressure		Peso Kg
		2 bar	4 bar	6 bar	8 bar	10 bar	12 bar	15 bar	20 bar		air	liquid	
180°	10.2	0,9	1,9	2,8	3,8	4,7	5,7	7,2	9,5	155	10 bar	20 bar	0,9
	10.4	1,5	3	4,5	6	7,5	9	11,5	15,5	245			2,4
	10.8	3,5	7	10	14	17	21	26	35	565			4,7
	10.18	6	12	18	25	31	37	47	63	990			12 bar



DIMENSIONS

S = PNEUMATIC - max. 10 bar



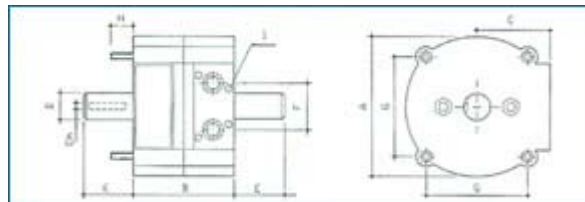
A MEMBER FOR MOVEMENTS ANGLE IRONS

MODEL	A	B	C	ØD	E	F	G	H	I	Weight		
	mm	mm	mm	mm	mm	mm	ØGas	mm	ØM	mm	mm	Kg
<b>5.2 S - 7.2 S</b>	82,5	72	40	**	**	28	1/8"	*	*	20	ISO 5599/1	0,9
<b>5.4 S - 7.4 S - 10.2 S</b>	125	70	65	14	18	40	1/4"	90	M6	20		2
<b>5.8 S - 7.4 S - 10.4 S</b>	125	90	65	14	18	40	1/4"	90	M6	20		2,4
<b>5.18 S - 7.18 S - 10.8 S</b>	166	108	87	16	20	40	1/4"	120	M8	25		4,7
<b>5.32 S - 7.32 S - 10.18 S</b>	166	166	87	16	20	44	1/4"	120	M8	25		6,5
<b>5.60 S - 7.60 S</b>	220	200	115	24	30	80	1/4"	165	M10	30		16,5
<b>5.120 S</b>	280	230	145	24	30	110	1/4"	310	M10	30		35

\* = Clamping by holes 6MA, depth 20mm, distance 60mm

\*\* = 10 mm. Hexagon, male in the upper part 12mm. length, and female in the lower part 12mm. depth.

T =HYDRAULIC - max. 20 bar



MODEL	A	B	C	D	E	Ch	F	G	H	I	Weight		
	mm	mm	mm	mm	Ømm	mm	mm	ØGas	mm	ØM	mm	mm	Kg
<b>5.2 T - 7.2 T</b>	82,5	72	40	16	27	5	28	1/8"	*	*	20	ISO 5599/1	0,9
<b>5.4 T - 7.4 T - 10.2 T</b>	125	70	65	25	35,5	8	40	1/4"	90	M6	20		2
<b>5.8 T - 7.4 T - 10.4 T</b>	125	90	65	25	45,5	8	40	1/4"	90	M6	20		2,4
<b>5.18 T - 7.18 T - 10.8 T</b>	166	108	87	32	51,5	10	40	1/4"	120	M8	25		4,7
<b>5.32 - 7.32 T - 10.18 T</b>	166	166	87	32	56,5	10	44	1/4"	120	M8	25		6,5
<b>5.60 T - 7.60 T</b>	220	200	115	44	63	14	80	1/4"	165	M10	30		16,5

\* = Clamping by holes 6MA, depth 20mm, distance 60mm.

" MINI " Series - Technical data

A little actuator able to solve big problems. The constructive principle, together with innovating materials permit to warrant higher performance such as:

- high frequencies running
- precise actuation
- constant torque all the actuation long
- high accelerations
- plenty of strokes



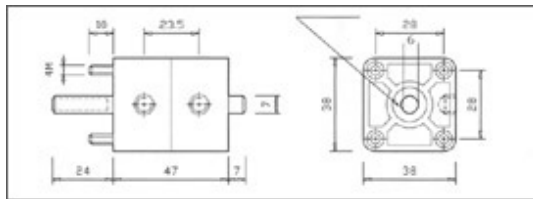
5.0

**mod. 5.0**

- **Rotation angle :**
- Operation pressures :
- Fluids :
- Materials :
- Net Weight :
- Fitting positions :
- Temperatures :
- Maximun loads :
- Maximun frequency :
- Displacement :

**mod. 5.0**

- 90°**
- min. 0,8 bar - max 10 bar  
compressed air liquids  
(water, water solutions or emulsions)
- body - strengthened plastic material  
shaft - stain less steel gasket-  
elastomer
- 100 grams
- everyone
- from -10°C a 60°C
- radial 80 N - axial 5 N
- 3 strokes/second
- 9 cc/a



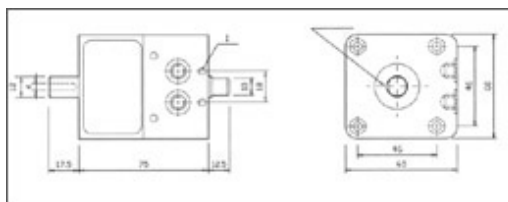
**mod 5.1 - mod. 14.1 mod 5.1 - mod. 14.1**



5.1.... 14.1

- **Rotation angle:**
- Operation pressures:
- Fluids :
- Materials :
- Net Weight :
- Fitting positions:
- Temperatures :
- Maximun loads :
- Maximun frequency:
- Displacement :

- 90° , mod. 5.1 - 270° , mod. 14.1**
- min. 0,8 bar max 20 bar  
compressed air, oil liquids  
(water, water solutions or emulsions)
- body - aluminium; shaft- stainless steel  
gasket - elastomer
- 700 grams
- everyone
- from -10°C a 60°C
- radial 210 N - axial 80 N
- 2 strokes/second mod. 5.1
- 1 strokes/second mod. 14.1
- 38cc/a mod. 5.1



MODEL	Feeding pressure/Torque in Nm											
	2 bar	3 bar	4 bar	5 bar	6 bar	8 bar	10 bar	12 bar	14 bar	16 bar	18 bar	20 bar
5.0-Revolution 90°	1,1	1,7	2,3	2,8	3,4	4,5	-	-	-	-	-	-
5.1-Revolution 90°	4	6	8	11	13	17	22	26	30	35	39	44
14.1-Revolution 270°	2	3	4	5,4	6,5	8,5	11	13	15	17,5	18,5	22